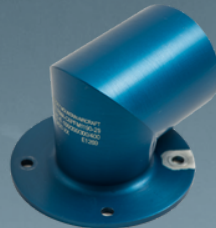


REPLACEMENT TEE & ELBOW(S)

FOR DHC-6 FUEL MANIFOLD SYSTEM

DESIGNED WITH YOU IN MIND

The replacement Tee and Elbow(s) built under our exclusively held Transport Canada PDA21-11 are a direct OEM replacement that's light on your wallet.



ELBOW
RMA-C6PFM1190-29



ELBOW (DRAIN STYLE)
RMA-C6PFM1190-27



TEE
RMA-C6PFM1191-27

COST EFFECTIVE PDA REPLACEMENT

Rocky Mountain Aircraft has engineered quality replacement Tee and Elbow(s) for Viking Air Limited (deHavilland) Twin Otter 100, 200, 300 and 400 Series.

These manufactured parts are a simple cost-effective replacement and interface with both the OEM and Rocky Mountain Aircraft's replacement Fuel Manifold Tubes (STC SA16-45).



Example with
RMA STC 16-45 Fuel Tube

ROCKY MOUNTAIN AIRCRAFT P/N	OEM VIKING AIR LTD P/N	DESCRIPTION
RMA-C6PFM1190-27	C6PFM1050-27 / C6PFM1190-27	ELBOW (DRAIN STYLE)
RMA-C6PFM1190-29	C6PFM1050-29 / C6PFM1190-29	ELBOW
RMA-C6PFM1191-27	C6PFM1051-27 / C6PFM1191-27	TEE

